

SV-640 Series Day/Night Camera



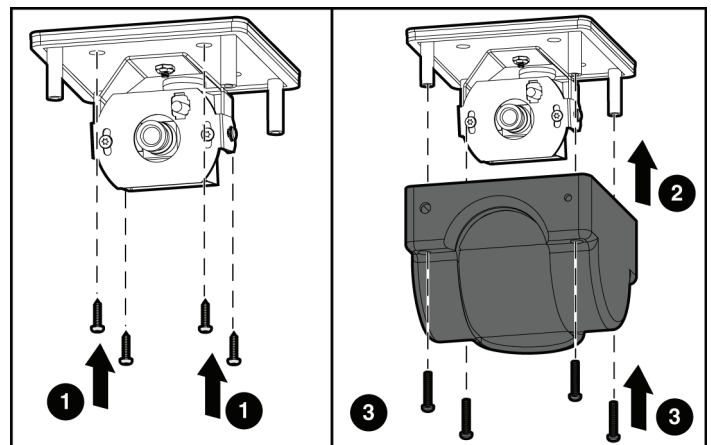
The SV-640 series cameras are compact mobile-rated cameras that mount easily in a variety of orientations. They can withstand typical road vibrations and harsh environments for long lasting performance. As a day/night camera, you can rely on getting the clearest image possible even in dim conditions. Use the following procedure to install the SV-640 Series Day/Night Camera.

Safety Precautions

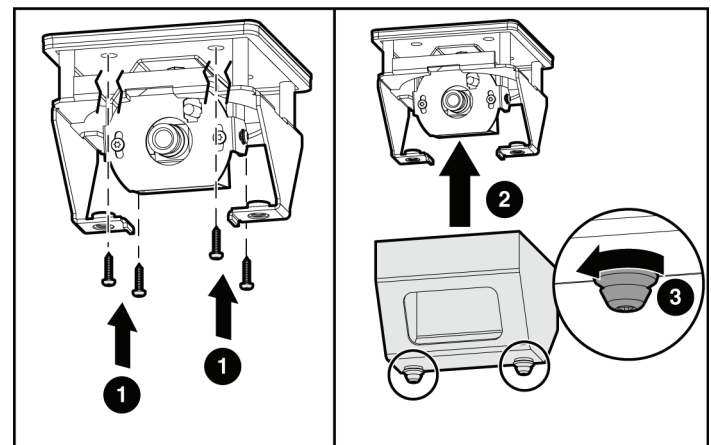
- To reduce the risk of electrical shock, disconnect the battery from the electrical system of the vehicle before starting the installation.
- Before inserting fasteners into the mounting surface, ensure that the underside of the mounting surface is clear of equipment that might be damaged by the screws.

Installation

1. Use the selector switch located on the small printed circuit board (PCB) to select if the red LED will blink or remain off when the camera receives power.
2. Using the base as a template, tap or otherwise mark four screw holes in the desired mounting location.
3. Drill a 0.875 inch hole in the approximate center of the four marked screw holes to thread the cables through.
4. Thread the cables through the drilled hole and use self-tapping screws or rivets to secure the base to the desired mounting location.
5. Repeat steps 2 - 4 for the optional SV-WAIS IR module. The SV-WAIS should be positioned in close proximity to the SV-640 camera. Once mounted, connect the SV-WAIS power cable to the extension cable on the SV-640 camera.
6. Connect the cables to the MDVR unit.
7. Loosen the security screws on the camera gimbal to adjust the camera angle to the desired field of view. This might require the use of an optional external monitor connected to the MDVR unit. Once completed, tighten the security screws in place.
8. Connect the LED/Microphone cable in the enclosure to the PCB on the base.
9. Secure the enclosure over the camera and base with the four included tamper-resistant screws with a size T10 TORX™ screwdriver.



Interior Wedge and Dome Installation (Interior Wedge Shown)



Exterior Wedge Installation

Notice to Users: This document is confidential and contains proprietary information belonging to Safety Vision, L.P. This document and the information contained herein cannot be distributed, communicated, reproduced, altered, or disseminated by any means, in whole or in part, without the express written consent of Safety Vision, L.P. Possession of this document constitutes the user's acceptance of these nondisclosure covenants. The information in this document is believed to be accurate in all respects. However, Safety Vision cannot assume responsibility for any consequences resulting from the use thereof. The information contained herein is subject to change without notice. Revisions or new editions to this publication may be issued to incorporate such changes.

SPECIFICATIONS	
SV-640 Dome/Wedge Camera	
Image Sensor	1/3-inch High Resolution Interline CCD
Signal Format	NTSC Standard
Lens Focal Length	3.6 / 4 / 6 / 12 mm
IR Illumination	SV- WAIS High-intensity IR Module
Synchronization	Internal
Resolution	560 TV Lines
Picture Elements NTSC/PAL	768 (H) x 494 (V)
Signal-to-Noise Ratio	> 50 dB (auto gain control off)
Power Supply	12V DC
Power Consumption	170 mA
Operating Temperature	-58°F ~ 140°F (-50°C ~ 60°C) (Exterior wedge with optional heater)

Limited Warranty

LIMITED 1-YEAR NEW PRODUCT WARRANTY

Safety Vision, L.P. ("SV") makes the following limited warranty, which is effective at the time of the original end-user purchase.

Note - Optional warranty products are available for all SV products and may be purchased at the time of the original end-user purchase or any time during the original Limited 1-Year New Product Warranty period.

SV warrants this product against defects in materials for a period of 1 year after the date of purchase. During this period, SV will repair or replace a defective product or part without charge to the customer. The customer must send the defective product or part to SV or an authorized SV dealer. The customer must pay for all transportation and insurance charges for sending the unit to be repaired. SV's total liability is limited to the original product cost.

Installation Guide

The customer should thoroughly read this guide before operating this product.

Customer's Responsibility

The above warranty is subject to the following conditions:

- Customer must notify SV within 10 days of discovering the defective product or part and provide a description of the defect and complete information about the manner of its discovery.
- All warranty servicing of this product must be performed by SV or an authorized servicing agent.
- Warranty extends only to defects in materials as limited above. Warranty does not extend to any product or part that has been lost or discarded by the customer; to damage to products or parts caused by misuse, accident, improper installation, improper maintenance, or use in violation of instructions furnished with the product; to units that have been altered or modified without authorization of SV; to damage to products or parts thereof that have had the serial number removed, altered, defaced, or rendered illegible; or to any failure of the product to function caused by burglary, fire, flood, war, riot, civil commotion, Acts of God, or any other condition beyond the control of SV.

Obtaining Warranty Service

To obtain warranty service, the customer must contact the SV Service and Warranty Manager at 713.896.6600 or 800.880.8855 to report a defective product. (The customer must report the model number and serial number if available.) The Service and Warranty Manager will assist in troubleshooting the problem and, if necessary, issue a return material authorization (RMA) number. The customer must include this number on the outside of each package shipped to SV.

Packing and Shipping Instructions

When a product requires service, only the affected component must be returned. The customer must use proper packing material to ensure against damage during shipping. Any shipping damage caused by improper packing is not covered under this warranty. In addition, the customer must include a return material authorization (RMA) number on the outside of each package shipped to SV and a letter explaining the defect with the product.

How to Reach Us

If you have exhausted the information in this document yet require further assistance or information, please contact Safety Vision toll-free at 1-800-880-8855 or send an e-mail message requesting assistance to: email@safetyvision.com.

CORPORATE HEADQUARTERS

6100 W. Sam Houston Pkwy. N.
Houston, TX 77041-5113
Main: 713.896.6600
Toll Free: 800.880.8855
Fax: 713.896.6640

www.safetyvision.com



Mobile video solutions for enhanced safety